

Billiard Control & Monitoring Software **USER'S MANUAL**

[The specification of Hardware system](#)

[The specification of system software.](#)

[Procedures of program installation.](#)

[Run the program](#)

[Billiard club program initialize](#)


[Software Troubleshooting](#)

[APPENDIX 1](#)

[APPENDIX 2](#)

The specification of Hardware system

Hardware	Minimum specification	Proposed specification
CPU	P200	Pentum3
RAM	64MB	256MB
HARD DISK	2GB	20GB
PORT	Serial + Parallel	Serial + Parallel + USB
CD ROM DRIVE	24X	40X
CD WRITER	-----	40X 16X 24X

 **Note :** *To safeguard the system against extreme electricity alteration and consequently not to face any problem concerning registering information, It is suggested to use UPS (Uninterrupted Power Supply)*



The specification of system software.

- a. Windows 98 or XP operation system
- b. Internet explorer 4 or higher
- c. Acrobat reader 5

- d. Installation of Arabic language in windows XP (refer to appendix 1)




Procedures of program installation.

For installation, do as followings:

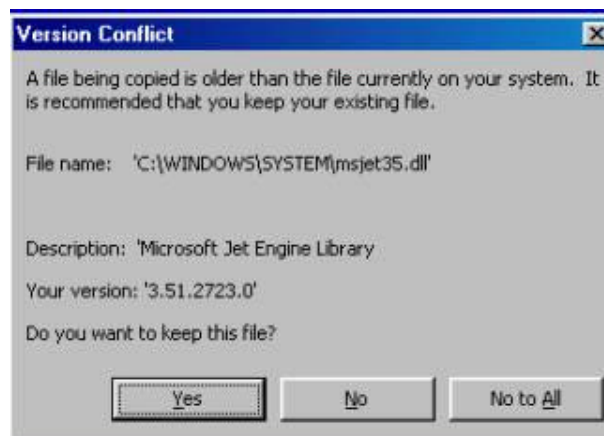
- e. Put installation CD in CD_Rom
- f. Select support folder from CD
- g. Run setup.exe file

Fill the procedure by click the appropriate option.

 **Note1:** *select ignore option if you see the message about following error.*




and click “Yes” key for this error.




Run the program

After installation the program, you can run “billiard.exe” by this path:

start > All Programs > Billiard

 **Note1:** After running the program for the first time, the shortcut of billiard.exe will be appear on your desktop.

 **Note2:** install the hardware lock (which is with software) on parallel port

If there is no hardware lock or it has not been installed correctly, you will see this message:

Hard ware Key not found

After entering the program for the first time, the form of club specification is opened. It is necessary to fill it completely and correctly.





The screenshot shows a 'setup form' dialog box with the following fields and controls:


- Club Name:
- Manager's name:
- Address:
- Tel:
- Number of tables:
- Serial No:
- Bank Password:
- Language:
- Buttons: Save, Cancel


These specifications are:

Name of club, manager's name, address, telephone number, number of available tables in club, software serial number

 **Note1:** software serial number is filled automatically and there is no need to change it.

 **Note2:** After filling the above-mentioned form and storing information, it is necessary to run the program again.

 **Note3:** to change the specifications of the club, it is required to use Utility programs. (It is with this CD). (These programs are introduced in appendix2)

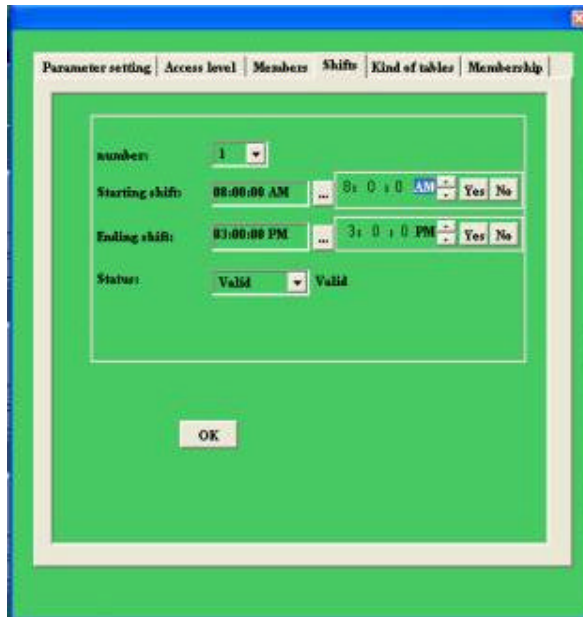
 **Note4:** User ID of the program is “ Management” (M is Upper letter) and its password is “ test” . It should be noted that the level of accessibility to utilize it is for management level and if needed, you can specify sum users in coffee shop or cashier.

(To get more information concerning the method of other users, definition, refer to help PDF file available in CD of software).



Billiard club program initialize

- 1 - Select “setting” Icon in main page
- 2 - Select “Shifts” tab



In this section you define shift timing
Shift default:

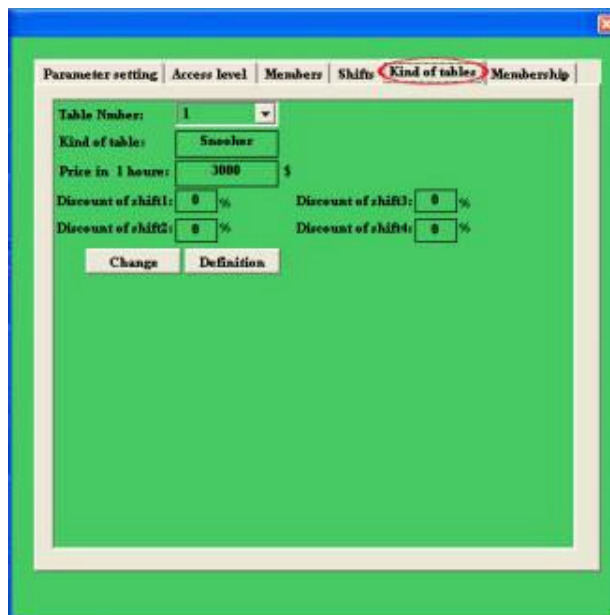
Shift 1 8:00:00 AM to 3:00:00 PM

Shift 2 3:00:01 PM to 11:59:59 PM

Shift 3 12:00:00 AM to 7:59:59 AM

For more information refer to help.pdf in cd program

3 - Select “Kind of table” tab



For define kind of table press **Definition** tab

Define tables item include: Kind of table, price in 1 hour and discount of shifts (1 to 4)

(For more information refer to **Definition**)

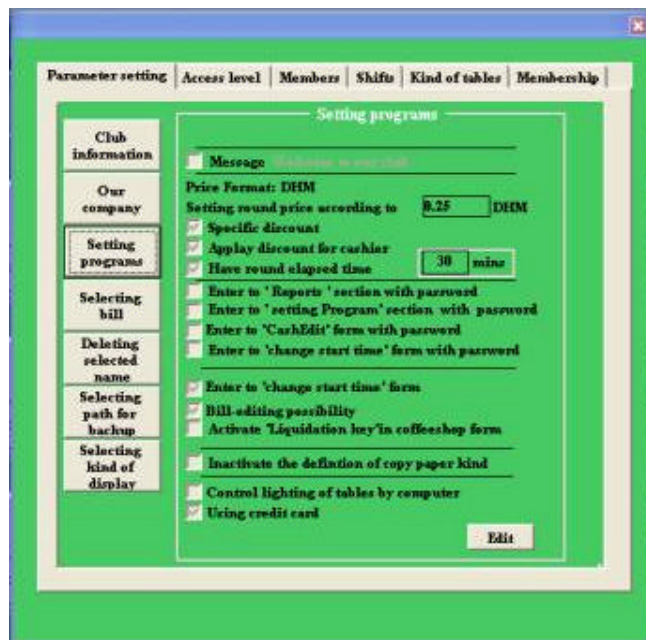
4- select “MemberShip” tab

Define kind of membership in month scale, membership rate and percentage discount for this kind

5- select “Access Level “ tab

For define or edit access level on 3 level (Management, Cash, Coffee Shop)

6- select “Parameter Setting “ tab



7- select “Setting program” key

Set these item

- Input “price format”
- Set “Control of lighting tables by computer “
if you use LCB (Light Control Board) box and press ... key ,
set serial port number .
(According LCB user manual)
- Set “using credit cart “
if you use Barcode scanner.
- For set or reset other items refer to help.pdf file in cd program.



Software Troubleshooting

Possible Errors of Program and How to Remove Them

◆● 76. Path not found

If the path of program is not correct, this error will appear

Removal of the error:

To correct the path automatically, runs the program again

◆● 380. Invalid property value

In printing, if your printer is only A4 paper source (donâ€™t have tractor) this error appear.

Removal of the error:

Enter the program with management password. Choose the “setting > setting program”

And then click Edit key and finally tick (ⓐ)

The following option:

ⓐ I nactive the definition of copy paper

◆● 13. Type Mismatch

Type - Mismatch Errors

Removal of the error:

Time format has changed from AM/PM.

To set it , follow this path.

1. Click on "Start"
2. Choose "Control panel"
3. Select "Date, Language, and Regional option" category
4. Click on "Regional option "
5. Click on "Customize "
6. Click on "Time "
7. Select AM symbol to AM
8. Select PM symbol to PM

◆◆ 3031â€œ Not a valid password

If the bank password is invalid, this error will appear.

Removal of the error:

Use software CD of Utility file.

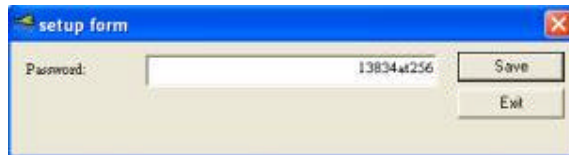
1. Insert the billiard programs CD in the CD drive
2. Click on " utility " folder
3. Run "accesspv. Exe"



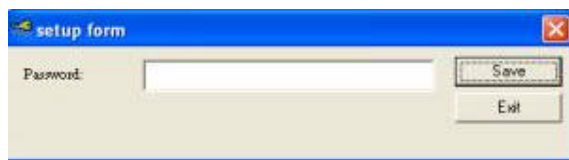
4. Click on " Get password " key
5. In path of billiard program. Open myxxxx.mdb file (xxxx = current year , for example my2004.mdb for 2004 or my2005 for 2005 and etc.)
6. Copy Database password.



7. Run "DBPassword.exe" (from utility folder in CD)



8. Paste Database Password



9. Click on "Save" key

10. Run again billiard program


◆◆ 3044â€œ Unrecognized


The Error of unrecognized bank

Removal of the error:

Database file is destroyed and restore database file from backup folder as following step:

1. In backup folder find a folder with name of current date for example if today is July 07, the folder is 7
2. In this folder for each hour is a folder. In current hourâ€™s folder a Database file is exist, by myxxxx.mdb format.
copy this file in path of billiard program.
3. Run again billiard program.
4. If Error is appear again, in step 2, copy Database file from an hour before.

 **Note1:** *Default path of billiard program is program files > prjbilliard1*

 **Note2:** *in extreme electricity alteration this error appears.*
It is suggested to use UPS (Uninterrupted Power Supply)




Appendix 1

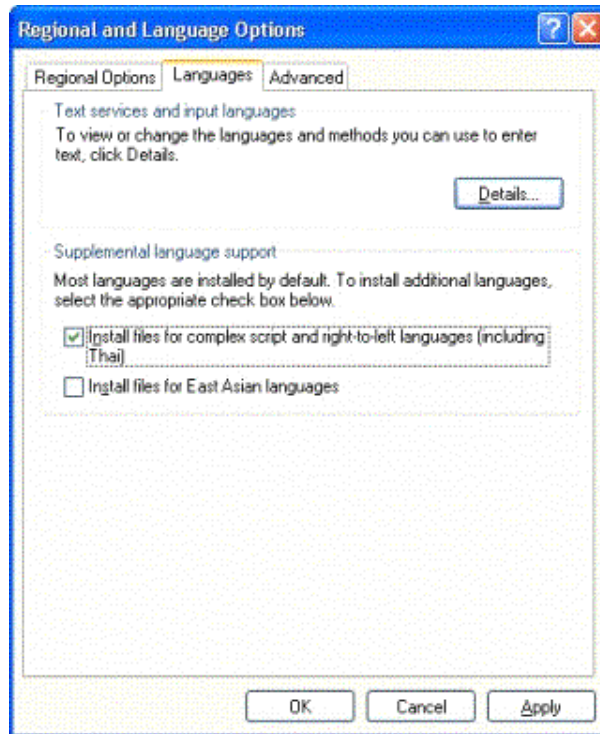
Adding Arabic language support

To add the Arabic language support in English version of Windows you need to install the complex script language option from the regional settings.

To install complex script languages:

1. Click on "**Start**"
2. Choose "**Control Panel**"
3. Select "**Date, Time, Language, and Regional Options**" category
4. Choose "**Regional and Language options**"
5. Click on "**Languages**" tab.
6. Enable option "**Install files for complex script and right-to-left languages**".
7. Click "**Apply**" button to complete installation.

 **Note:** *This is the same status in the French version of Windows XP if you need to add Arabic language, follow the same steps with the French interface*



Application compatibility **Running Non Unicode Arabic** **programs**

Windows XP as Windows 2000 does not support Arabic DOS programs or 16-bit Arabic programs.

Windows XP supports 32 bit Arabic programs both Non-Unicode and Unicode programs. However, to be able to run the non-Unicode Arabic programs you need to set the system settings to be enabled for the Arabic language.

To select a language for Non-Unicode programs:

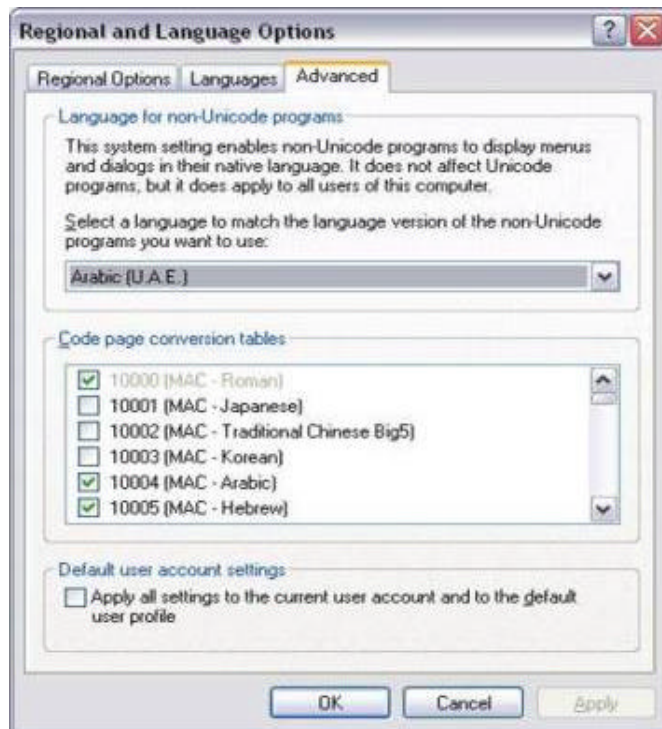
1. Click on "Start".

2. Choose "**Control Panel**"
3. Select "**Date, Time, Language, and Regional Options**" category.
4. Choose "**Regional and Language option**".
5. Click on "**Advanced**" tab.
6. Select from the list the required language and its country.



Note:

- Most of the available programs in the market are still non-Unicode.
- This system setting enables non-Unicode programs to display menus and dialogs in their native language. It does not affect Unicode programs, but it does apply to all users of current computer.
- Select any Arabic country as appropriate



Running Arabic programs in compatibility mode

Arabic Applications that worked on earlier versions of Windows may fail to function properly on Windows XP for a variety of reasons. An application may expect older formats of Windows data, or it may expect

user information, such as that in personal and temporary folders, to be in specific locations or formats. Problems such as these mostly apply to Arabic applications written for Windows 95, Windows 98, or Windows Me, but.

To solve this problem and so enabling a better user experience with legacy applications, Microsoft has integrated application compatibility technologies into

Windows XP that come into play whenever an application is installed on the operating system, whether in the course of a system upgrade or during regular operations. This is the same for the Arabic applications; however, there is no support for DOS and 16-bit Arabic applications under Windows XP even with the compatibility mode.

Microsoft has included two application compatibility tools within Windows XP user interface; the Program Compatibility Wizard and the compatibility shell extension. Users can easily access and use these tools to adjust their applications compatibility settings. These two tools can be used for Arabic application as well.

IF you have problem running Arabic applications over Windows XP

If the programs still does not work with the compatibility mode please contact the vendor of the application.

You can inform Microsoft about the program problem by contacting the email alias below, please send in details the program name, version and the problem description:

aracomp@Microsoft.com .

For more information

Please visit the web site:

<http://www.microsoft.com/windowsxp/pro/techinfo/planning/appcompat/default.asp>



APPENDIX 2

Utility Programs



Club.exe

For Change Specification of club



Table.exe

For change number of available Tables.(Maximum number in this version is 84 tables)



DBpassword.exe & accesspv.exe

For change password of database



Repair 2000.exe

For repair and compact database



Serial.exe

For change parameters of serial port in program with management user ID and password .

